



AP 2-D Art and Design Portfolio

Yihan Kwon

2022



Image 1

Sustained Investigation

Height: 16 inches

Width: 11.5 inches

Material(s): Photos and images from Myanmar protests layered and worked using Photoshop.

Process(es): I cut specific pieces of photos and combined them to resemble a hand sign for protest.

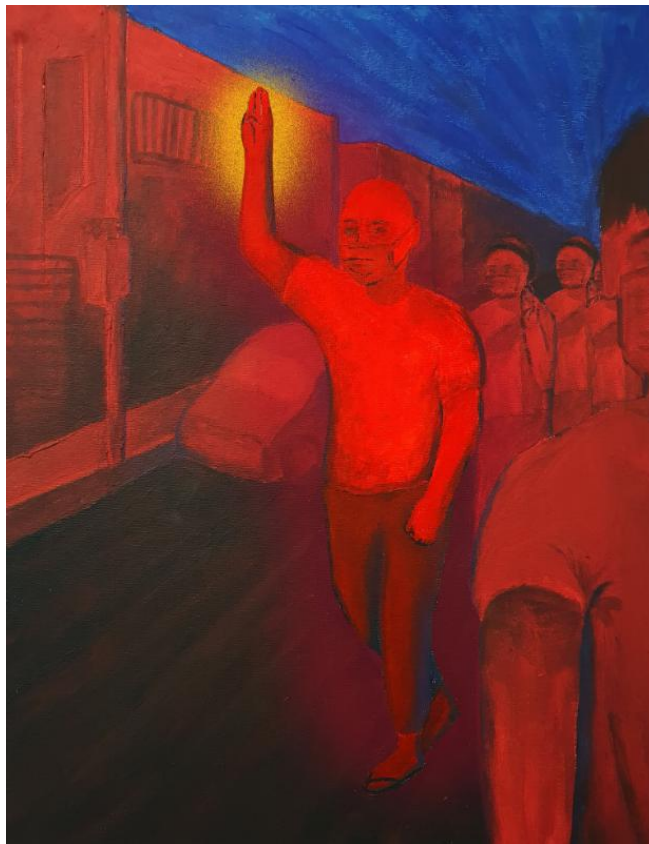


Image 2

Sustained Investigation

Height: 16 inches

Width: 12 inches

Material(s): Acrylic paint, canvas, and Photoshop.

Process(es): I used the process of layering to explore the complex situation of Myanmar.

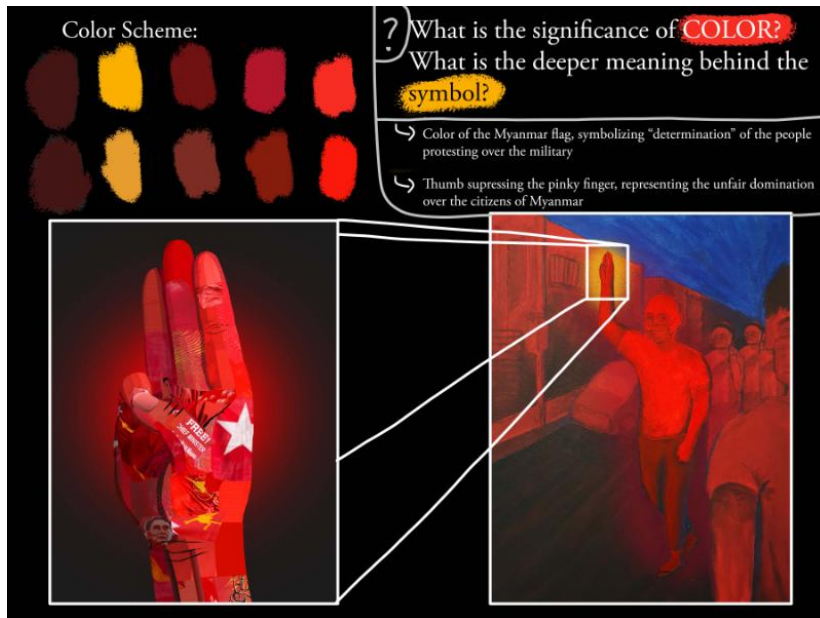


Image 3

Sustained Investigation

Height: 18 inches

Width: 14 inches

Material(s): This process/reflection piece was created using Photoshop.

Process(es): I combined the two art pieces to show the process of zooming out.



Image 4

Sustained Investigation

Height: 15 inches

Width: 11 inches

Material(s): Digital software called Sketchbook, Photoshop, and some Myanmar newspapers.

Process(es): Layers of drawing, coloring, shading, and a layer for the torn Myanmar newspapers background.



Image 5

Sustained Investigation

Height: 8.5 inches

Width: 6 inches

Material(s): Oil pastel covered paper coated with black acrylic paint, soap, and tempera paint.

Process(es): I used a scratchboard tool to carve out the paint to reveal the true colors beneath the paper.



Image 6

Sustained Investigation

Height: 18 inches

Width: 24 inches

Material(s): This process/experiment documentation was created using Photoshop.

Process(es): Images of before and after finishing the piece, showing the process of experimenting different paint



Image 7

Sustained Investigation

Height: 16 inches

Width: 12 inches

Material(s): Acrylic paint and canvas.

Process(es): Rough and thick layering of painting to capture the intense contrast and bold colors.



Image 8

Sustained Investigation

Height: 8 inches

Width: 8 inches

Material(s): I used plexiglass, knife, ink, and paper.

Process(es): I carved out a drawing on a plexiglass by a knife, later inking it to print on paper.

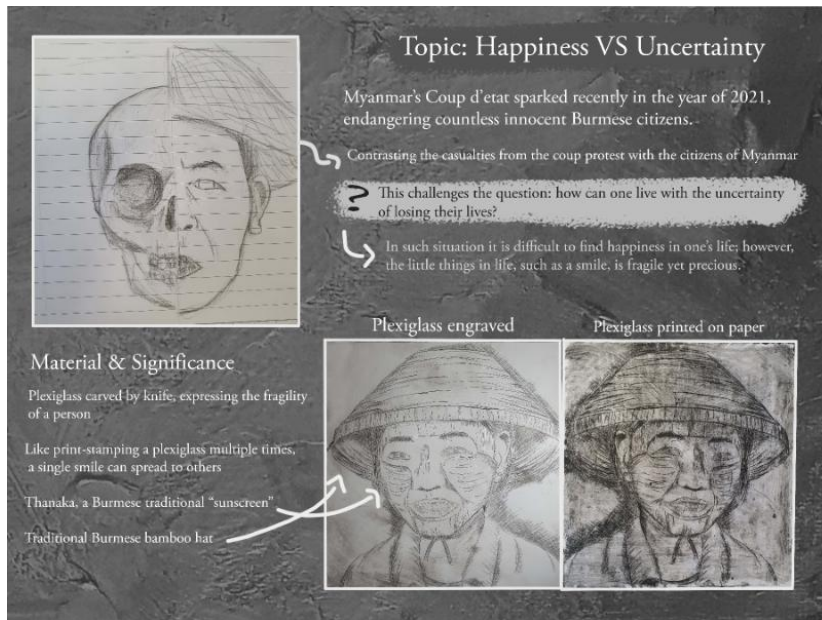


Image 9

Sustained Investigation

Height: 18 inches

Width: 24 inches

Material(s): I used plexiglass, knife, ink, paper. This documentation of revision was created using Photoshop.

Process(es): Images are put together, showing the process of idea used in the finalised piece.



Image 10

Sustained Investigation

Height: 12 inches

Width: 8 inches

Material(s): I utilised water color paint, paper, and Photoshop. Primary source photo from a Burmese friend.

Process(es): The piece was drawn on paper, and was painted by water color. Later it was finalised in Photoshop.

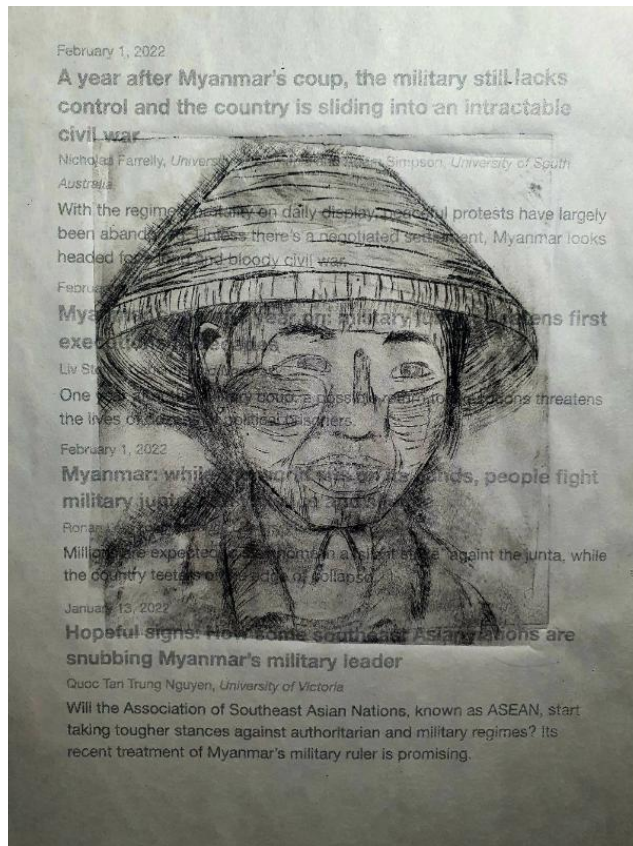


Image 11

Sustained Investigation

Height: 12 inches

Width: 8 inches

Material(s): I used Myanmar newspaper, plexiglass, ink, and knife.

Process(es): I printed a carved plexiglass drawing onto a Burmese newspaper about the military coup situation.



Image 12

Sustained Investigation

Height: 18 inches

Width: 24 inches

Material(s): This process piece was a collection of my etching plexiglass printings using Photoshop.

Process(es): All the trial and error printing pieces are collected together, showing improvement over time.



Image 13

Sustained Investigation

Height: 12 inches

Width: 16 inches

Material(s): Canvas, acrylic paint, multiple newspapers, and glue were used.

Process(es): Acrylic paint was painted after newspapers on the canvas were glued.



Image 14

Sustained Investigation

Height: 12 inches

Width: 16 inches

Material(s): Canvas, acrylic paint, multiple newspapers, and glue were used.

Process(es): Acrylic paint was painted after newspapers on the canvas were glued.



Image 15

Sustained Investigation

Height: 12 inches

Width: 16 inches

Material(s): I used a canvas, multiple Burmese newspapers, and glue.

Process(es): Small ripped pieces of newspaper are glued together to form two sides of a face of a Burmese citizen

Written Evidence

Sustained Investigation

1. Identify the question(s) or inquiry that guided your sustained investigation.
2. Describe how your sustained investigation shows evidence of practice, experimentation, and revision guided by your question(s) or inquiry.

Response 1:

I question the stability of Myanmar: How is the ongoing Myanmar Coup affecting the daily lives of Burmese citizens amidst the genocides, economic downfall, the burning of houses, etc? How are they feeling? I was hoping to find out about how people dealt with this situation in this modern day. How does the digital age impact a situation like this? For the people in Myanmar: the protesters, soldiers, police, ethnic and religious minorities, and the ordinary Burmese citizens, what are their motivations, and what are the consequences of their choices?

Response 2:

I explored the context behind Myanmar and experimented with primary and secondary sources of photographs, newspapers, and articles as a medium for my pieces (images 1, 4, 11, 13, 14, and 15). For image 10, I utilised a primary photograph by reaching out to someone who always served lunch to me and got to know his story. He is separated from his family in Myanmar. With different materials, I practiced and revised earlier works shown in images 13 and 14. Images 1, 2, 13, and 14 explore the aspect of the Myanmar Coup protest and the reaction to the crisis.



Work 1

Selected Works

Height: 16 inches

Width: 11.5 inches

Idea(s): Broken images show the fragments of Myanmar yet also shows unity towards freedom for their country.

Material(s): Photos and images taken from Myanmar protests using Photoshop.

Process(es): I cut specific pieces of photos and combined them to resemble the protest hand sign for unity.



Work 2

Selected Works

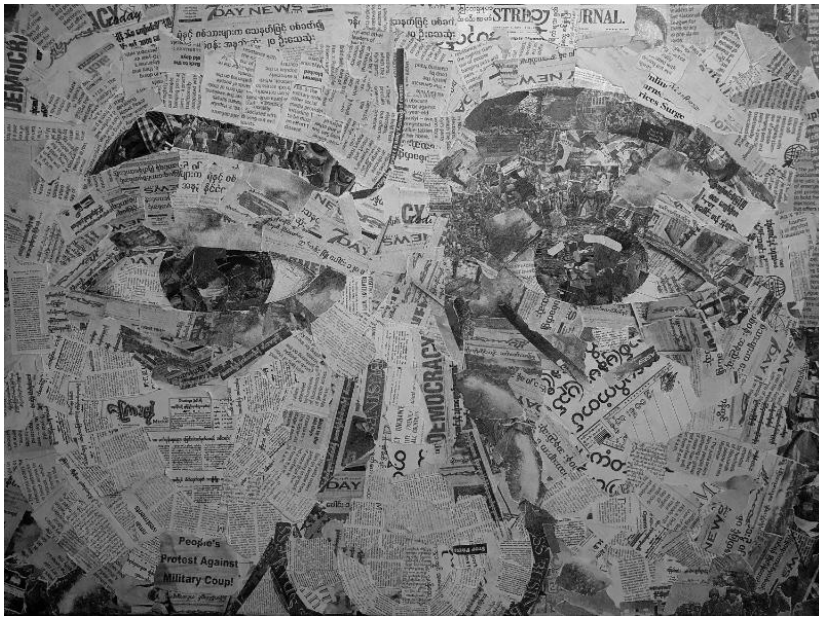
Height: 8.5 inches

Width: 6 inches

Idea(s): I inquired about the perspective of oppressed military soldiers, like puppets being controlled.

Material(s): Oil pastel covered paper coated with black acrylic paint, soap, and tempera paint.

Process(es): I used a scratchboard tool to carve out the paint to reveal the true colors beneath the paper.



Work 3

Selected Works

Height: 12 inches

Width: 16 inches

Idea(s): I contrasted the different emotions of a Burmese citizen: anger and worry towards the future.

Material(s): I used a canvas, multiple Burmese newspapers, and glue.

Process(es): Small ripped pieces of newspaper are glued together to form two sides of a face of a Burmese citizen



Work 4

Selected Works

Height: 12 inches

Width: 16 inches

Idea(s): Capture the unity of Burmese citizens against the immovable force of the military policemen.

Material(s): Canvas, acrylic paint, multiple newspapers, and glue were used.

Process(es): Acrylic paint was painted after newspapers on the canvas were glued.



Work 5

Selected Works

Height: 16 inches

Width: 11.5 inches

Idea(s): A shared moment between people who value each other. Shows the warmth and joy taken in that moment.

Material(s): Water color, chalk, paper, pencil, and Photoshop.

Process(es): Water colored drawing combined with a chalk background using Photoshop.